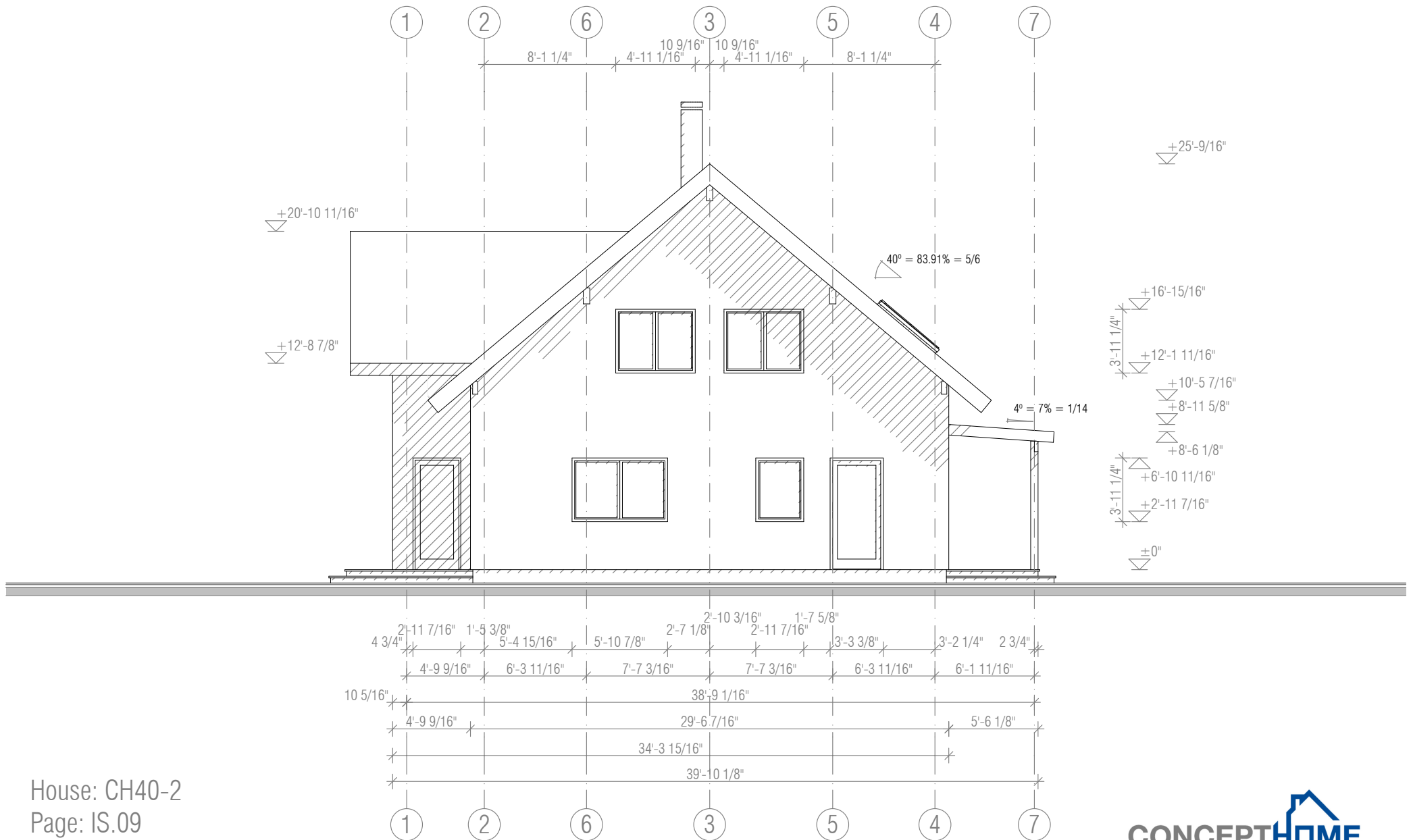
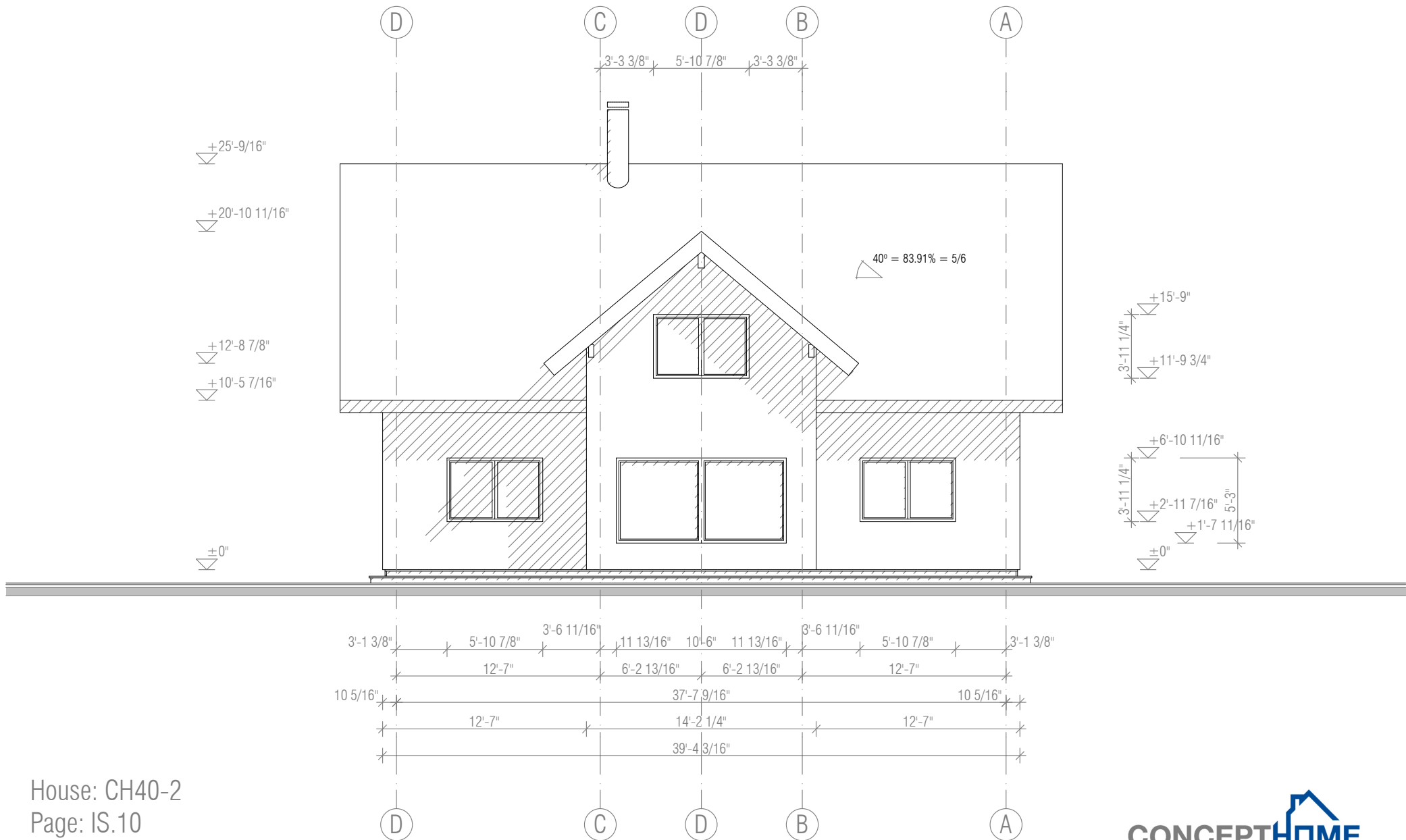


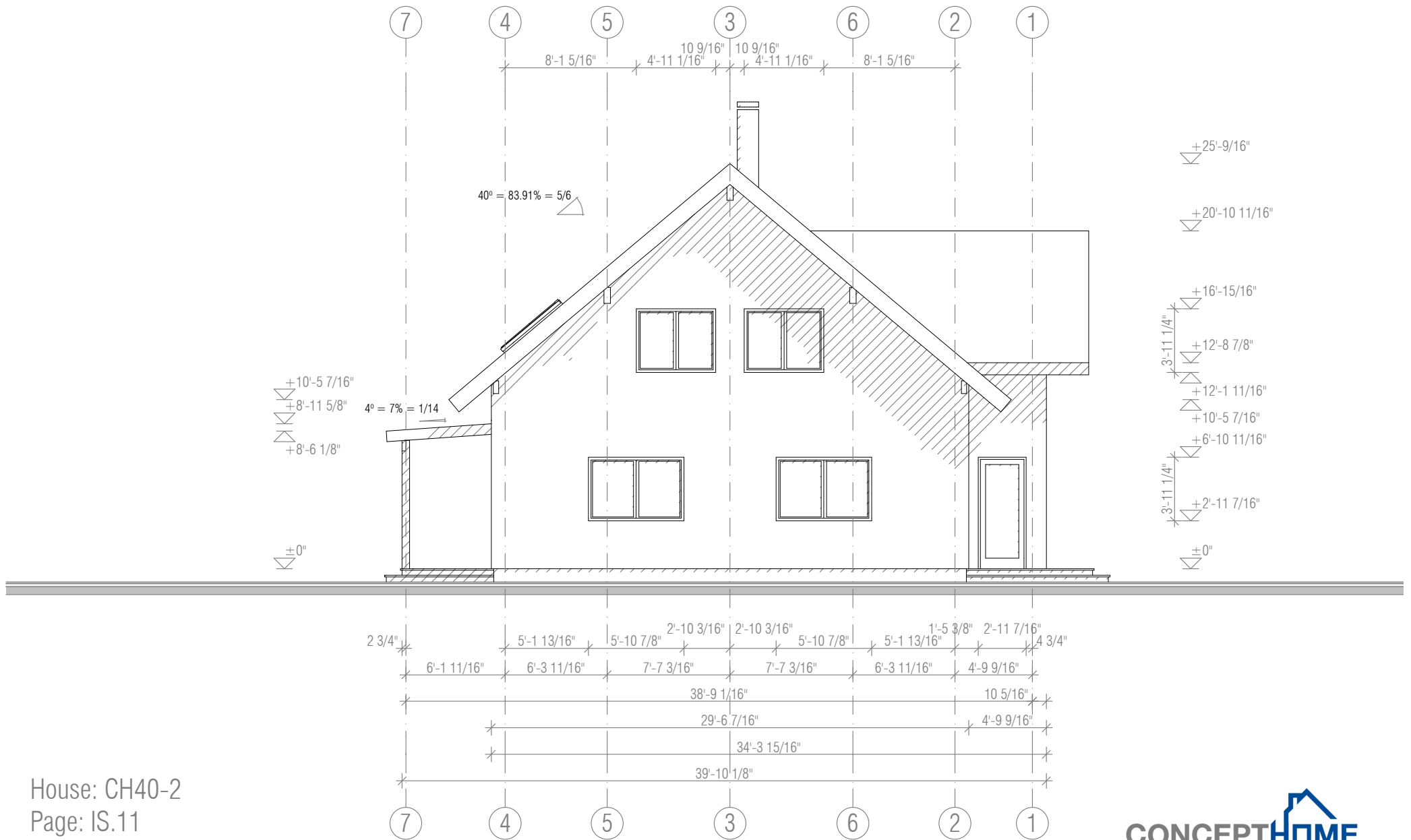
House: CH40-2  
 Page: IS.08  
 Drawing: ELEVATION FRONT  
 Scale: 1/8" = 1'-0" (Paper: Arch A landscape)



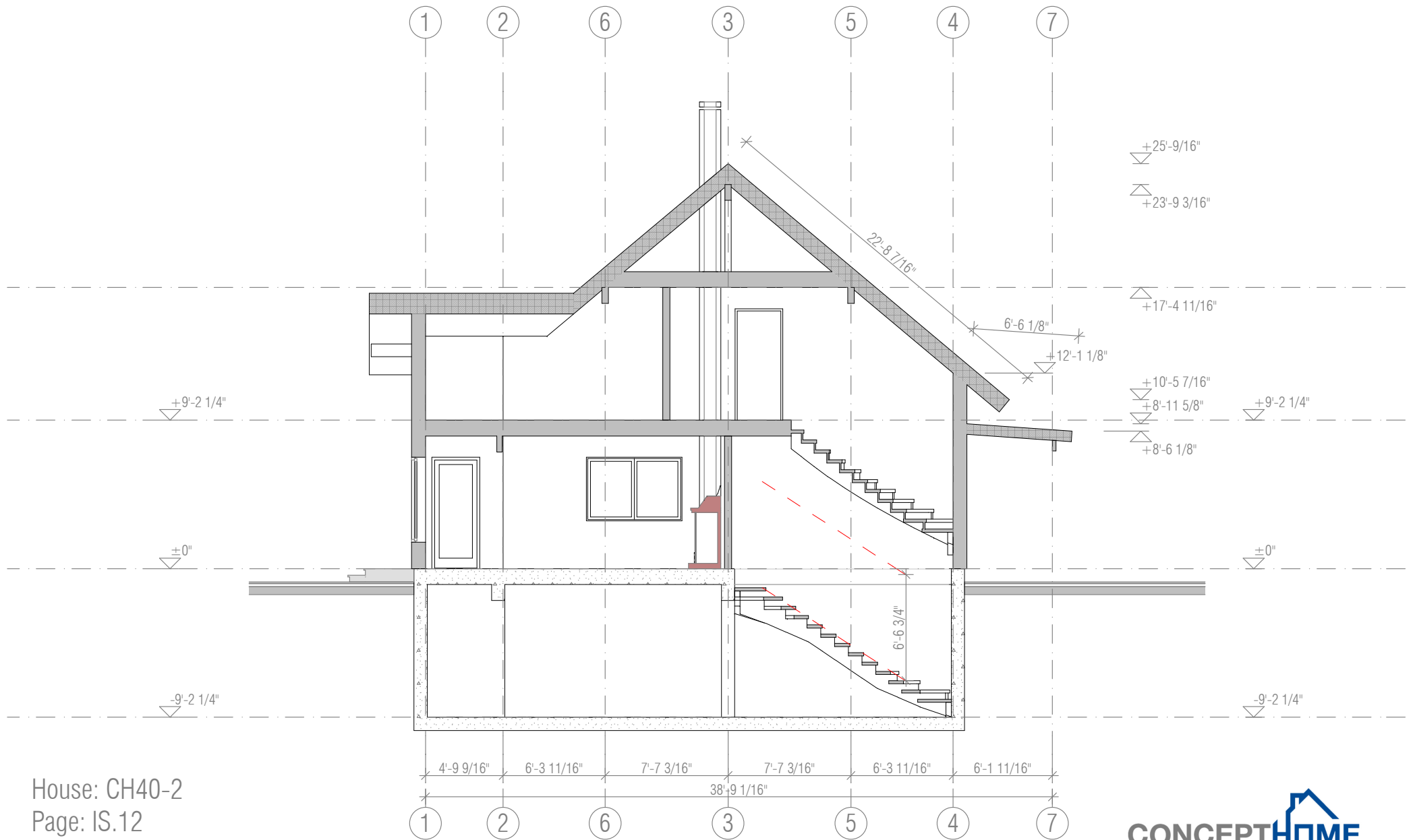
House: CH40-2  
 Page: IS.09  
 Drawing: ELEVATION LEFT  
 Scale: 1/8" = 1'-0" (Paper: Arch A landscape)



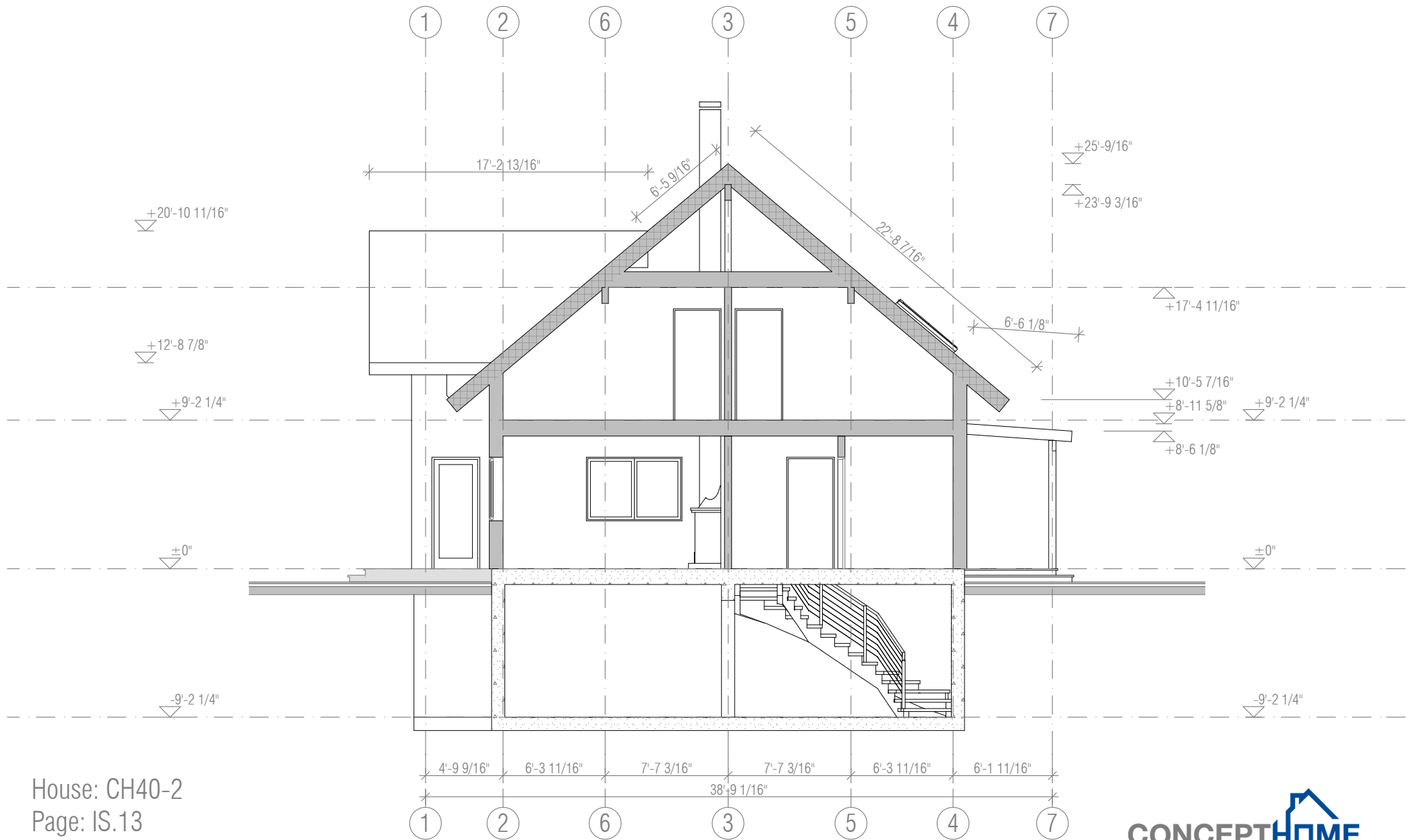
House: CH40-2  
 Page: IS.10  
 Drawing: ELEVATION REAR  
 Scale: 1/8" = 1'-0" (Paper: Arch A landscape)



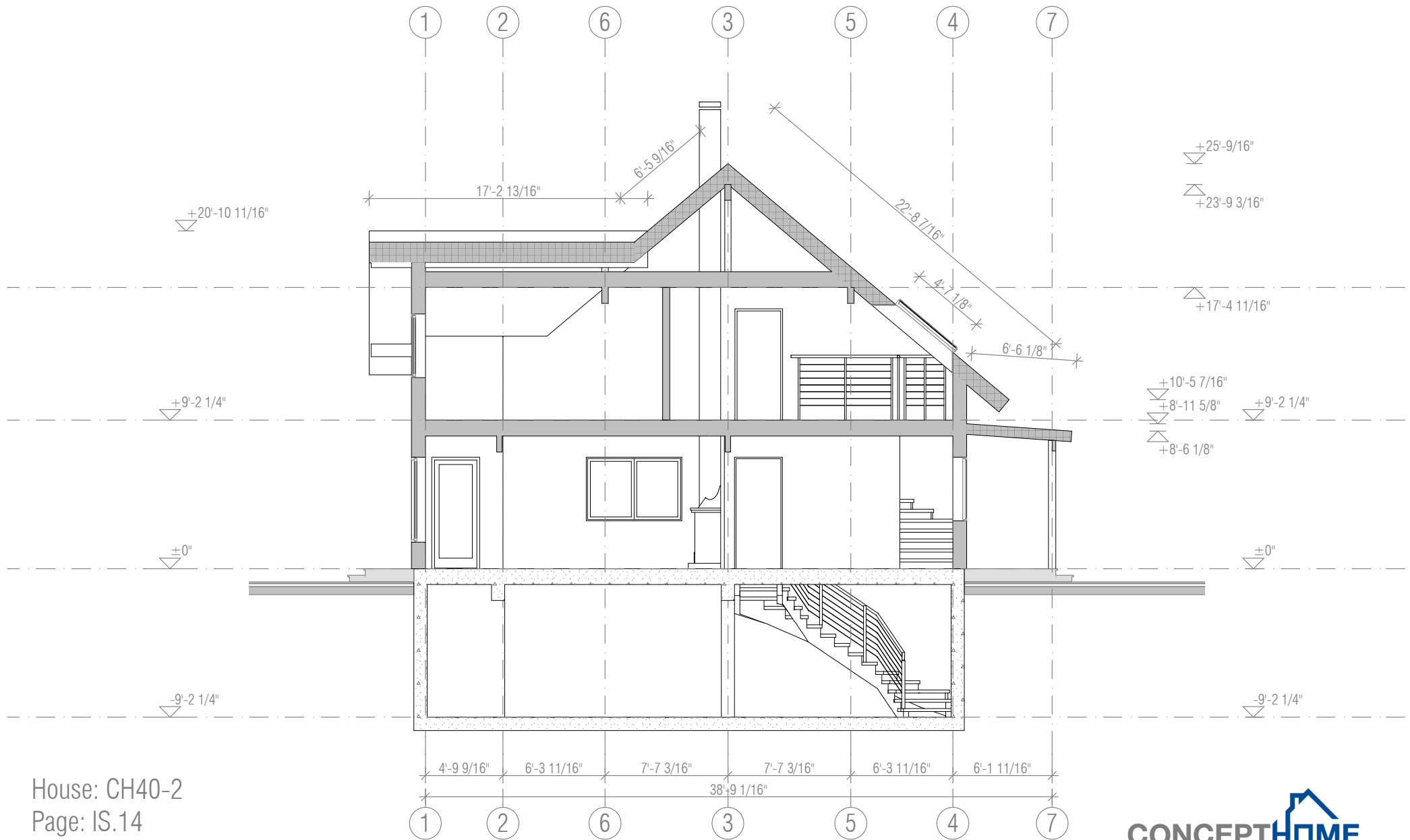
House: CH40-2  
 Page: IS.11  
 Drawing: ELEVATION RIGHT  
 Scale: 1/8" = 1'-0" (Paper: Arch A landscape)



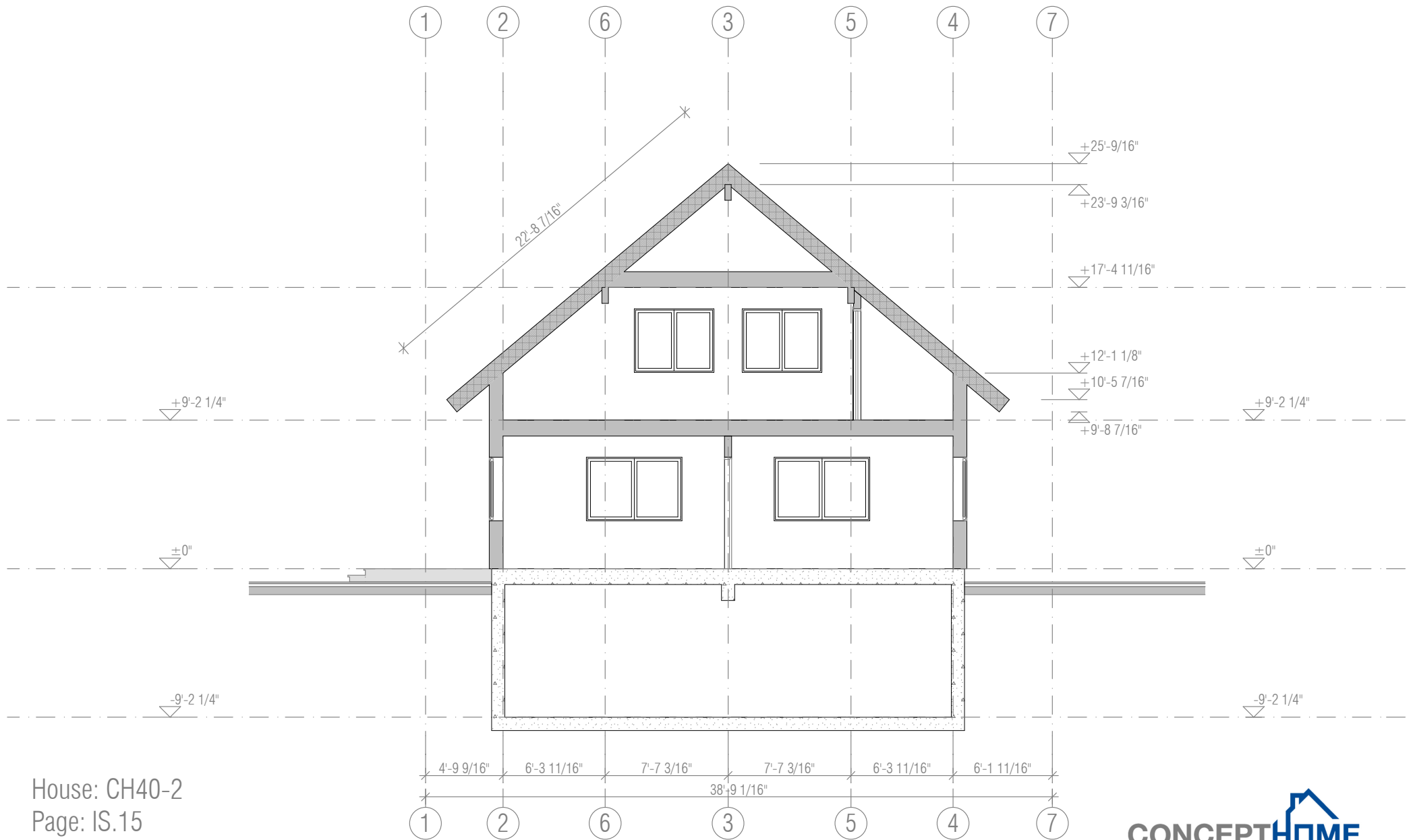
House: CH40-2  
 Page: IS.12  
 Drawing: SECTION A  
 Scale: 1/8" = 1'-0" (Paper: Arch A landscape)



House: CH40-2  
 Page: IS.13  
 Drawing: SECTION B  
 Scale: 1/8" = 1'-0" (Paper: Arch A landscape)



House: CH40-2  
 Page: IS.14  
 Drawing: SECTION C  
 Scale: 1/8" = 1'-0" (Paper: Arch A landscape)



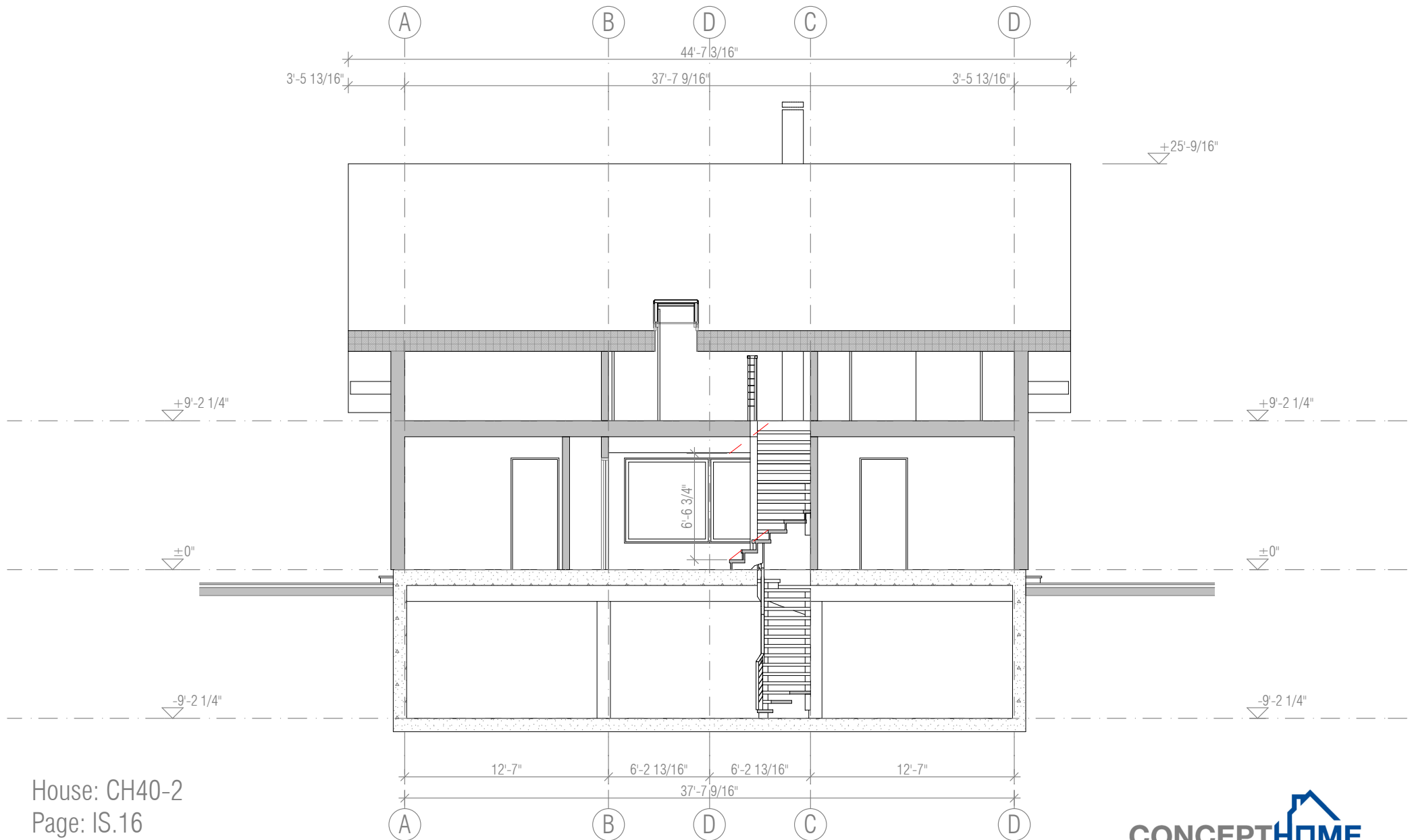
House: CH40-2

Page: IS.15

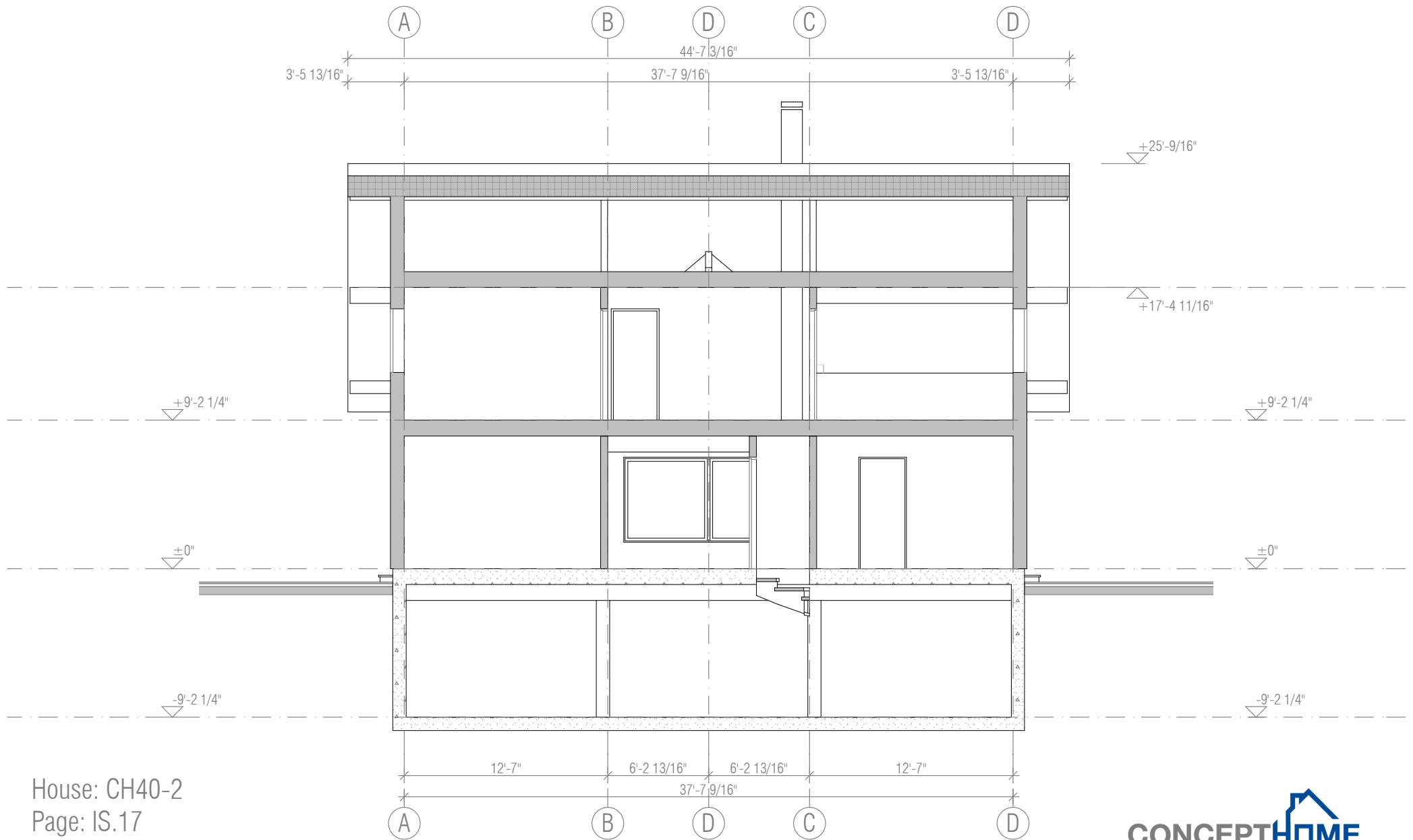
Drawing: SECTION D

Scale: 1/8" = 1'-0" (Paper: Arch A landscape)

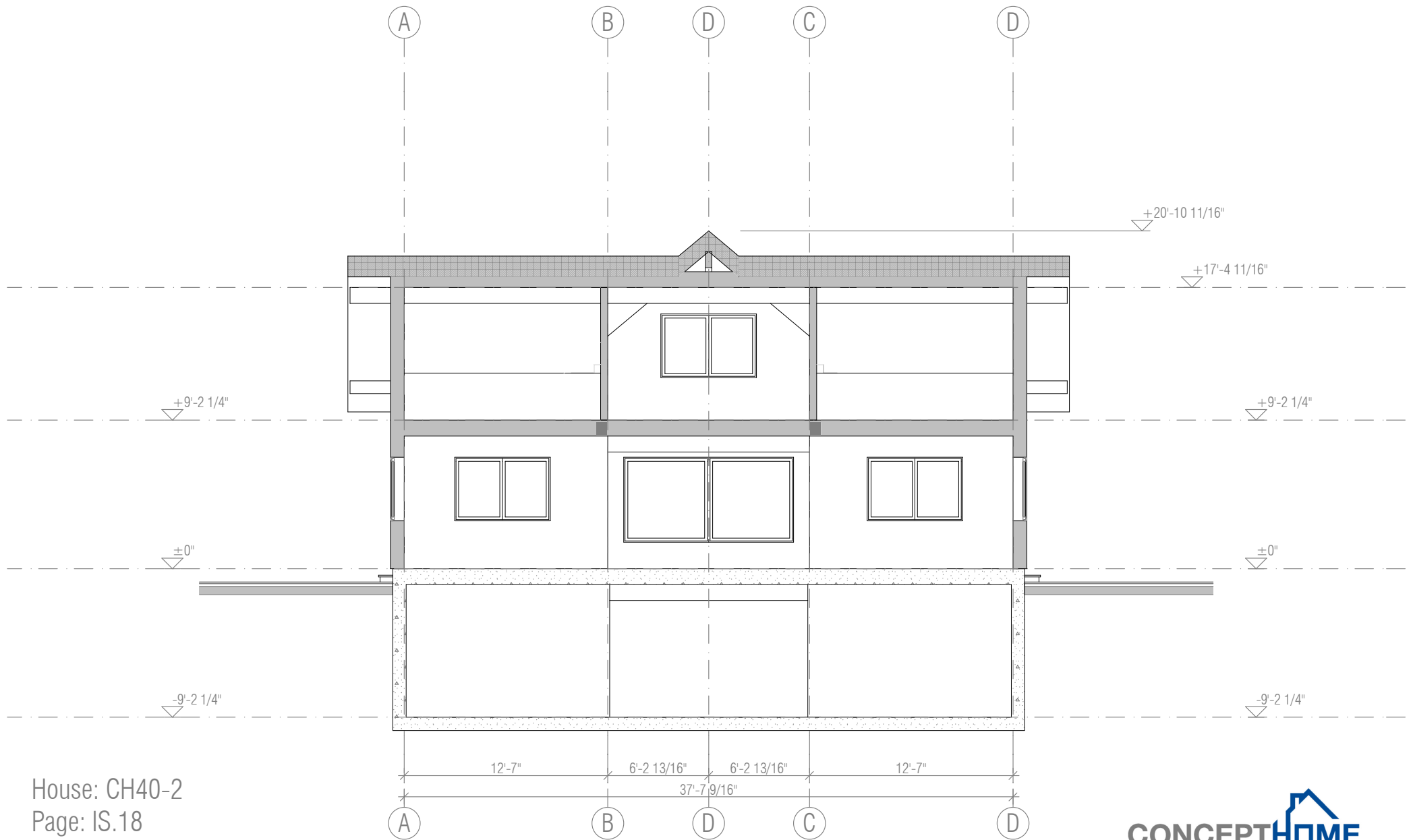




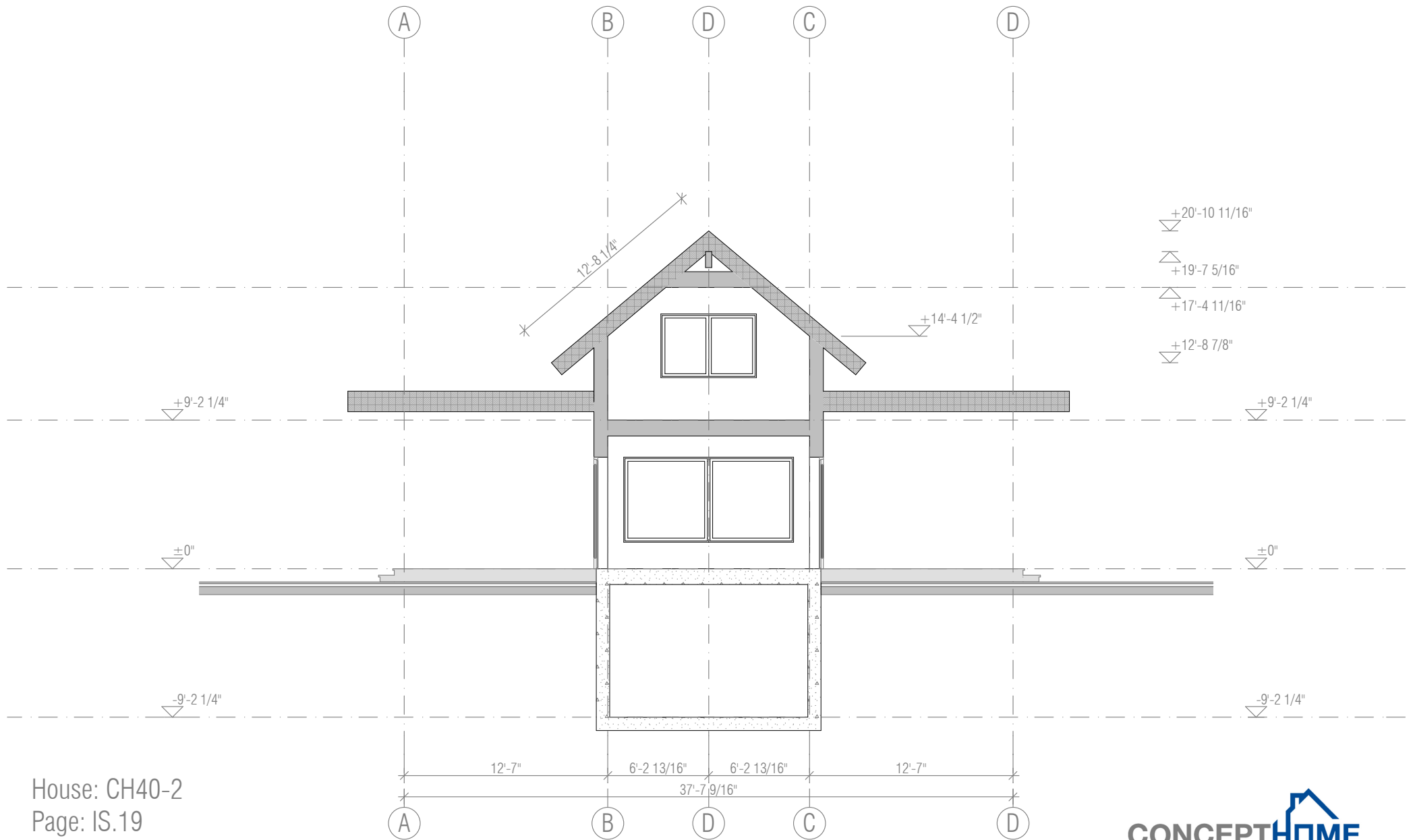
House: CH40-2  
 Page: IS.16  
 Drawing: SECTION E  
 Scale: 1/8" = 1'-0" (Paper: Arch A landscape)



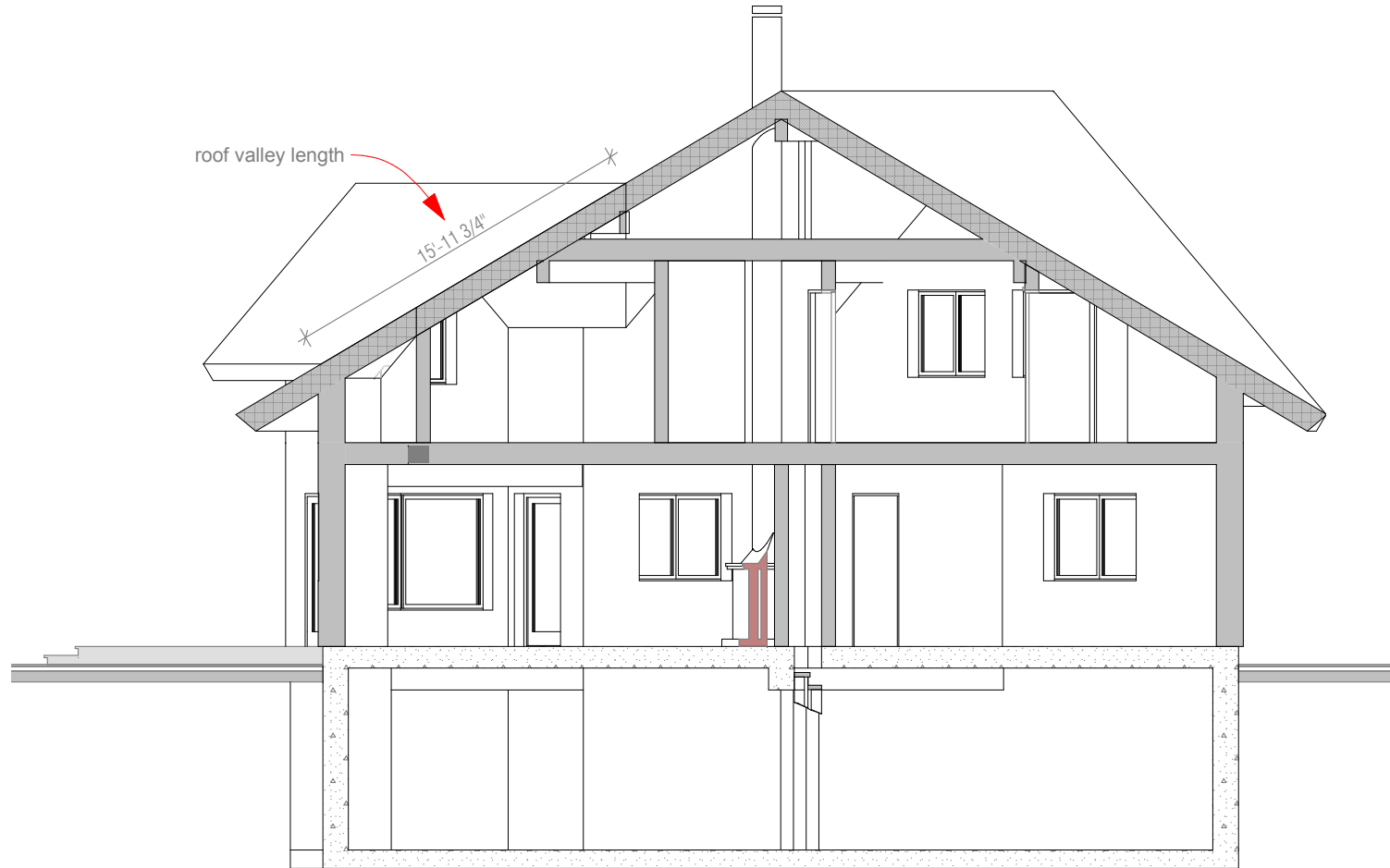
House: CH40-2  
 Page: IS.17  
 Drawing: SECTION F  
 Scale: 1/8" = 1'-0" (Paper: Arch A landscape)



House: CH40-2  
 Page: IS.18  
 Drawing: SECTION G  
 Scale: 1/8" = 1'-0" (Paper: Arch A landscape)



House: CH40-2  
 Page: IS.19  
 Drawing: SECTION H  
 Scale: 1/8" = 1'-0" (Paper: Arch A landscape)



House: CH40-2

Page: IS.20

Drawing: SECTION R1

Scale: 1/8" = 1'-0" (Paper: Arch A landscape)